



SurCoPrimer

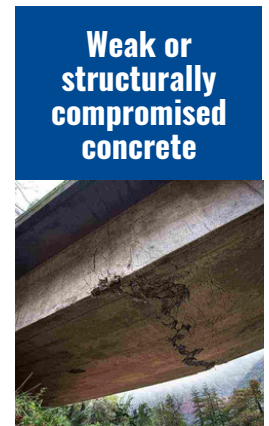
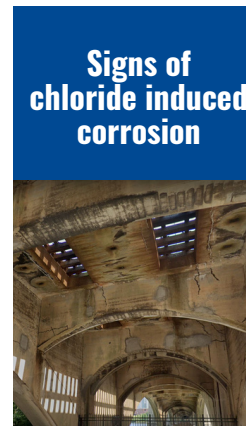
Corrosion Inhibiting Concrete Primer and Strengthener

SURCOPRIMER: a system used as an underlayment for concrete repairs, sealants, coatings, and FRP. This primer fixes underlying issues that can cause concrete repair systems to fail, such as corrosion and weak substrates.



WHEN TO USE

Prior to the installation of fiber reinforced polymers (FRP), coatings, paints, overlays, waterproofing membranes, etc.



BENEFITS

- SurCoPrimer is a corrosion inhibitor that penetrates the weak and contaminated concrete substrates to increase adhesion and concrete strength.
- Elevate and buffer the pH
- Increase tensile and compressive strength
- Reduce permeability
- Remove/pacify water-soluble chlorides
- Create a non-corrosive environment for the embedded steel

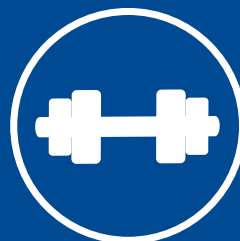
EXPECTED PERFORMANCE



PROVIDES REHAB TO SUBSTRATE PRIOR TO FRP



REDUCE WATER PERMEABILITY

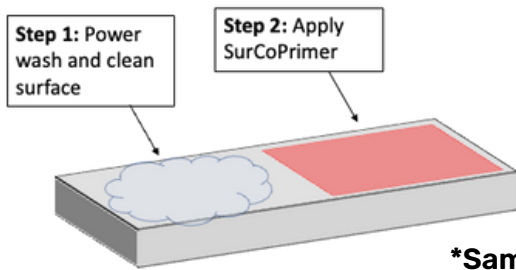


INCREASE IN CONCRETE STRENGTH

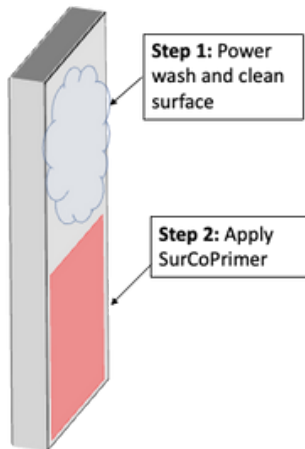


CREATES NON CORROSIVE ENVIRONMENT

SCP CONSTRUCTION DETAIL



***Same detail for overhead application**



SCP CAUTION AND FIRST AID

Inhalation: If breathing is difficult due to inhalation of vapor or mist, move person to fresh air and administer oxygen. If breathing has stopped give artificial respiration. Keep person warm, quiet, and get medical attention.

Eye Contact: Rinse eyes with cool water for 15 minutes. Hold eyelids open during flushing with water. Get medical attention.

Ingestion: If swallowed, immediately drink two glasses of water and induce vomiting. Get medical attention immediately. Do not give anything to an unconscious or convulsing person. For additional information on personal protective equipment, first aid, and emergency procedures, refer to the product Material Safety Data Sheet (MSDS) on the job site or contact the company at the address or phone number given below.

Disposal of container: Triple rinse inside of container, seal opening and dispose of properly.

Handling: SURTREAT SCP is to be applied by professional contractors only. All applicators should wear OSHA and NIOSH recommended protective equipment. Do not use or dilute the product in closed areas without adequate ventilation. Immediately close the container after removal of the solution. Avoid contact with skin, eyes and clothing. Do not smoke, eat or drink during application. Wash thoroughly after handling. Keep out of reach of children. Do not inhale or ingest or modify the solution. Refer to MSDS.

Clean Up: In case of spills or leaks, wear suitable protective equipment. Contain spill and collect with absorbent material or process and transfer to a suitable container, ventilate area. Avoid contact. Dispose of in accordance with current, applicable local, state and federal regulations.

Precautions: KEEP OUT OF REACH OF CHILDREN. DO NOT SWALLOW. Use with adequate ventilation. Avoid mist and direct contact with eyes, skin and clothing. Wear suitable protective goggles, gloves, and clothing. In case of insufficient ventilation, wear suitable respiratory equipment. If you feel ill, seek medical advice. Wash clothing prior to re-use.

SCP PHYSICAL/CHEMICAL CHARACTERISTICS

Boiling point: 212F

Specific gravity: 1.03

Flashpoint: > 212F pH: 8 – 8.5

Appearance and odor: amber liquid with chemical smell

Shelf life: 24 months in an unsealed factory container

Storage: protect from freezing

SCP APPLICATION PROCEDURE

Surface preparation: Prior to applying SURTREAT SCP the surface must be clean, sound, and reasonably dry.

Application: SURTREAT SCP is applied by roller, brush or spray onto the concrete surface. When spraying, use conventional airless spray system or hand-pressure equipment. A minimum of two applications is usually required. Apply liberally until substrate is saturated. Spread with squeegee, brush or roller until adsorbed. Waiting time between applications, will vary depending on environmental conditions and absorbency of substrate, is typically one hour. When applying prior to installation of a repair mortar, concrete overlay, coating or membrane, care must be taken to remove any SURTREAT SCP residue before the mortar or concrete is applied. This can be achieved by rinsing with water, pressure washing or grit blasting. After application, allow substrate to dry before applying coating or membrane.

Distribution rate should be about 100-120 sf/gal. It can be adjusted depending on project requirements.

SCP PACKAGING

5 gallon pail and 55 gallon drum.

SCP LIMITATIONS

- Minimum ambient temperature and substrate temperature of 35F. Do not apply when temperature is expected to fall below freezing within twelve hours.
- SURTREAT SCP will not penetrate sealers, coatings, paints, and membranes.
- When used indoors caution should be taken to provide adequate ventilation and additional protective gear such as respirators should be worn by the applicators.

LIMITED WARRANTY NOTICE

Every reasonable effort is made to apply Surtreat® exacting standards both in the manufacture of our products and in the information that we issue concerning these products and their use. We warrant our products to be of good quality and will replace any products proved defective. Satisfactory results depend not only upon quality products, but also upon many factors beyond our control. Therefore, except for such replacement, SURTREAT® MAKES NO WARRANTY OR GUARANTEE, EXPRESS OR IMPLIED, INCLUDING WARRANTIES OF FITNESS FOR A PARTICULAR PURPOSE OR MERCHANT ABILITY, RESPECTING ITS PRODUCTS, and SURTREAT® shall have no other liability with respect thereto. Any claim regarding product defect must be received in writing within one (1) year from the date of shipment. No claim will be considered without such written notice or after the specified time interval. User shall determine the suitability of the products for the intended use and assume all risks and liability in connection therewith. Any authorized change in the printed recommendations concerning the use of our products must bear the signature of the Surtreat® Technical Manager. TPS and SURTREAT are trademarks of Surtreat Solutions. All rights reserved 2021. For professional use only. Not for sale to or use by the general public.

CONTACT

Surtreat Solutions
437 Grant Street, Frick Building #1210
Pittsburgh PA 15219

PHONE: 412 281 1202
www.surtreat.com

FAX: 412 281 1282
info@surtreat.com