



SURTREAT SURCOAT

Polymer Modified Portland Cement Coating

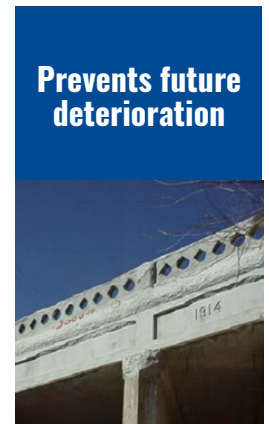
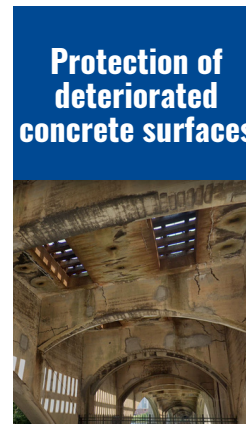
SURCOAT:

is a polymer-modified Portland cement based coating for application over concrete surfaces to provide a water resistant exterior surface. It is troweled brushed or sprayed on at a thickness of 1/8 to 1/4 inch. Volatile corrosion inhibitor added to the SurCoat functions to inhibit and prevent corrosion of the embedded reinforcement on structures new or old.



WHEN TO USE

For use on cement based substrates vertical or overhead. Not for use as a traffic membrane.



BENEFITS

- Outstanding protection against moisture
- 30-year proven performance of the corrosion inhibitor component
- Proven laboratory and site performance
- Simple to use
- Can be applied to a variety of reinforced concrete surfaces
- Environmentally friendly
- Breathable & Extremely durable
- Uniform concrete color

EXPECTED PERFORMANCE



EXTREMELY DURABLE, LONG LASTING FINISH

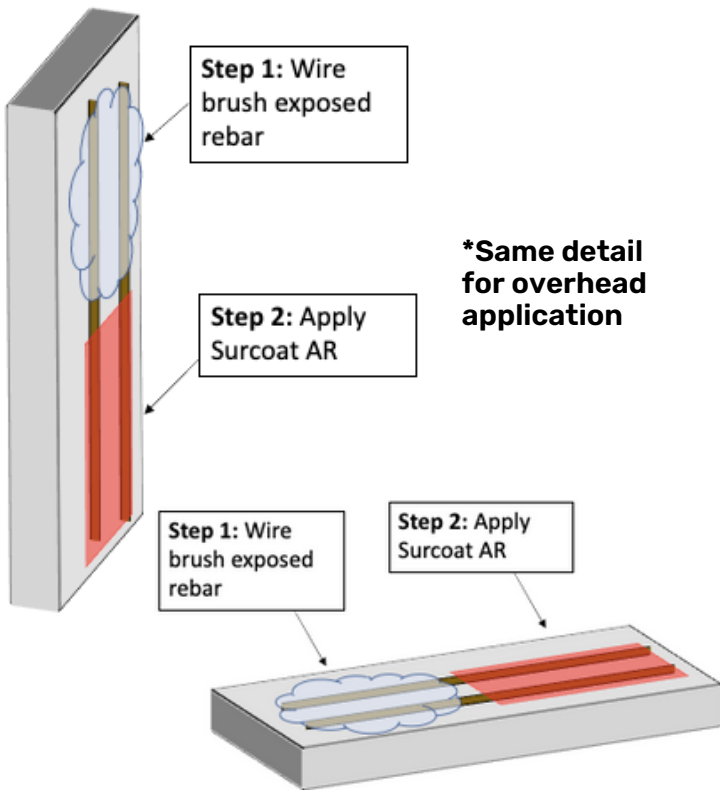


CAN BE APPLIED TO VARIETY OF SURFACE TYPES



30 YEAR PROVEN PERFORMANCE OF INHIBITOR COMPONENT

CONSTRUCTION DETAIL



CAUTION AND FIRST AID

Inhalation: If breathing is difficult due to inhalation of vapor or mist, move person to fresh air. If you feel ill, seek medical advice.

Eye Contact: In case of eye contact, flush immediately with plenty of water for 20 minutes and seek medical advice. Skin Contact: Wash thoroughly with soap and water. If irritation persists, seek medical advice.

Ingestion: If swallowed, do not induce vomiting. Drink plenty of water. If unconscious, do not give anything. Seek medical attention immediately.

For additional information on personal protective equipment, first aid, and emergency procedures, refer to the product Material Safety Data Sheet (MSDS) on the job site.

Risks: Avoid contact with eyes and skin. Wash with water. May cause eye irritation. May cause skin irritation. Harmful if absorbed through skin. Harmful if swallowed.

Precautions: KEEP OUT OF REACH OF CHILDREN. Use with adequate ventilation. Avoid mist and direct contact with eyes, skin and clothing. Wear suitable protective goggles, gloves, and clothing. In case of insufficient ventilation, wear suitable respiratory equipment. If you feel ill, seek medical advice. Wash clothing prior to re-use.

For Best Performance: Do not apply to hot surfaces. Cool with water (mist). Application should be made when rain is not expected for twelve hours.

VOC Content: This product contains no volatile organic compounds.

Clean Up: In case of spills, restrict area to only those personnel needed. For Large Spills: Dike and contain for intended use or disposal. For Small Spills: May be flushed to sewer if permitted by state, federal and local regulations. Otherwise, use absorbent to complete cleanup. Dispose of in accordance with current, applicable local, state and federal regulations.

Disposal of container: Triple rinse inside of container, seal opening and dispose of properly.

PHYSICAL/CHEMICAL CHARACTERISTICS

Boiling Point: 212° F

Specific Gravity: 1 to 1.2

Flash Point: N/A PH: 9.5

Solubility in Water: 100%

Appearance and Odor: White, milky fluid, mild odor

Vapor Pressure (mm Hg): N/A

Vapor Density (Air=1): <1 (lighter)

Evaporation Rate (Butyl Acetate =1): <1(slower)

Viscosity: 120 KU

APPLICATION PROCEDURE

Place dry mix in 5 gallon container and mix thoroughly. Place liquid ingredients in 5 gallon pail. Add dry ingredient mix slowly to liquid mix with continuous mixing using a paddle mixer until homogenous and smooth.

Application And Coverage: Above formulation makes 2.0 gallons of SURCOAT, which will cover at the rate of 25 to 50 sq. ft. per gallon. It can be applied using a brush, roller or hopper spray gun. It has a 30-minute pot life and should be mixed while using to keep homogeneous. Surface can be primed with solution of water and Surtreat Latex (50/50).

White or light gray color SURCOAT can be made by replacing all or some of the regular cement with white cement. Apply to a clean, cool and dry surface. It will be hard to the touch in about one (1) hour. Be sure that there is no residual TPS-II or other products on the concrete surface before application.

PACKAGING

5 gallon pail

LIMITATIONS

- Minimum ambient temperature and substrate temperature of 35F.
- Do not apply when temperature is expected to fall below freezing within twelve hours.

LIMITED WARRANTY NOTICE

Every reasonable effort is made to apply Surtreat® exacting standards both in the manufacture of our products and in the information that we issue concerning these products and their use. We warrant our products to be of good quality and will replace any products proved defective. Satisfactory results depend not only upon quality products, but also upon many factors beyond our control. Therefore, except for such replacement, SURTREAT® MAKES NO WARRANTY OR GUARANTEE, EXPRESS OR IMPLIED, INCLUDING WARRANTIES OF FITNESS FOR A PARTICULAR PURPOSE OR MERCHANT ABILITY, RESPECTING ITS PRODUCTS, and SURTREAT® shall have no other liability with respect thereto. Any claim regarding product defect must be received in writing within one (1) year from the date of shipment. No claim will be considered without such written notice or after the specified time interval. User shall determine the suitability of the products for the intended use and assume all risks and liability in connection therewith. Any authorized change in the printed recommendations concerning the use of our products must bear the signature of the Surtreat® Technical Manager. TPS and SURTREAT are trademarks of Surtreat Solutions. All rights reserved 2021. For professional use only. Not for sale to or use by the general public.

CONTACT

Surtreat Solutions
437 Grant Street, Frick Building #1210
Pittsburgh PA 15219

PHONE: 412 281 1202
www.surtreat.com

FAX: 412 281 1282
info@surtreat.com