

Surtreat Solutions, Inc.
 437 Grant Street
 Frick Building Suite 1210
 Pittsburgh, PA 15219 USA
 P: 412.281.1202



Research & Development
 University of Pittsburgh
 Applied Research Center
 Pittsburgh, PA 15238 USA
 P: 412.281.1202

NJ DOT BRIDGE MAINTENANCE PROGRAM

Since the inception of the NJ DOT Bridge Maintenance Program in 2007, SURTREAT has been in integral part in **extending the service life** of New Jersey’s Infrastructure. Using our corrosion inhibitor technology, **Surtreat has been used in over 300 structures and over 3.5 million square feet.**

Year	Project Name	No. of Structures	Sq. Feet
2007	NJ DOT Maintenance Program Route 78 Essex City	33	316,000
2008	NJ DOT Maintenance Program Route 287	38	523,000
2009	NJ DOT Maintenance Program Essex City	53	697,000
2010	NJ DOT Maintenance Program Route 19 (Sanzari)	38	383,000
2011	NJ DOT Maintenance Program Mercer City	39	433,000
2012	NJ DOT Maintenance Program (Various)	15	176,000
2013	NJ DOT Maintenance Program (Various)	3	38,500
2014	NJ DOT Maintenance Program (Various)	19	220,000
2015	NJ DOT Maintenance Program (Various)	21	242,000
2016	NJ DOT Maintenance Program (Various)	23	264,000
2017	NJ DOT Maintenance Program (Various)	15	110,000
2018	NJ DOT Maintenance Program (Various)	17	198,000
2019	NJ DOT Maintenance Program (Various)	24	286,000
2020	NJ DOT Maintenance Program (Various)	17	192,500

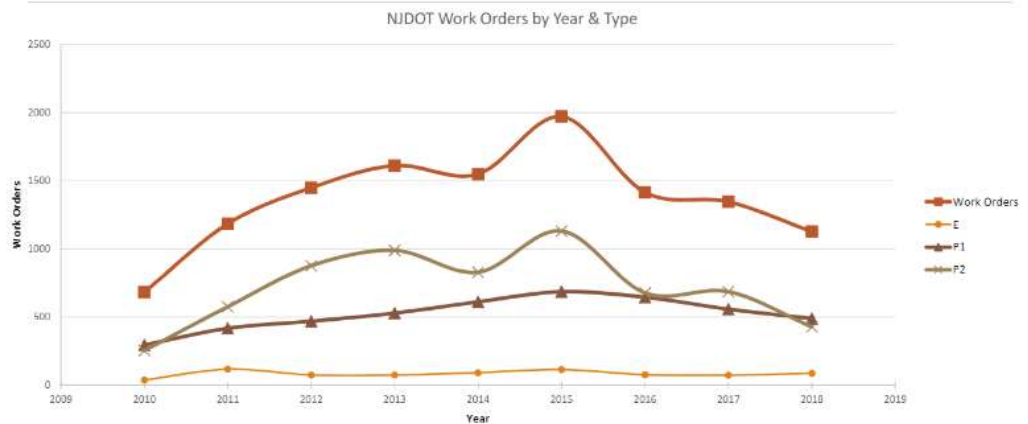
The New Jersey Department of Transportation realized a study in 2018 to analyze the results of the maintenance program and they found that since 2010, their work orders are divided in the following categories:

Emergencies **E** – Immediate Repair

Priority 1 **P1** – 30 Days to Repair

Priority 2 **P2** – Repair Required

NJDOT Bridge Work Orders by Year



New Jersey’s bridge maintenance program has since reduced the number of work orders (repairs) in their bridges.

SURTREAT® Life Extension Technology for your Concrete Assets

Surtreat Solutions, Inc.
437 Grant Street
Frick Building Suite 1210
Pittsburgh, PA 15219 USA
P: 412.281.1202



Research & Development
University of Pittsburgh
Applied Research Center
Pittsburgh, PA 15238 USA
P: 412.281.1202

NJ DOT SPECIFICATION

Surtreat corrosion inhibitor is specified by the NJ DOT in the following section:

Division 550 – Structure Rehabilitation

Section 551-Bridge Deck Rehabilitation

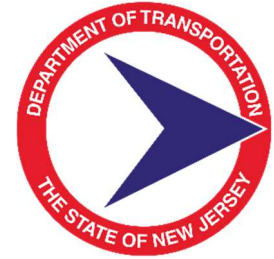
551.01 Description

(K) Deck Corrosion Inhibitor

This work shall consist of applying corrosion inhibitors to bridge deck surfaces, to allow penetration and treatment on concrete surface to reduce the effects of corrosion in reinforced concrete. A representative from the manufacturer is required to be present for a minimum of two days at the start of construction to ensure proper application procedures are followed.

(E) Deck Corrosion Inhibitor

The equipment for applying corrosion inhibitor to the concrete surface shall be used as per manufacturer's instructions for SURTREAT – Total Protection System (TPS). Concrete surfaces must be prepared by suitable mechanical means, by abrasive blast cleaning or high-pressure water at sufficient volume and pressure to remove all surface contaminants such as oil, grease, curing membranes, efflorescence, algae, moss, dirt, etc. All loose materials and existing coatings must be removed to provide a clean, sound dry, and absorbent surface prior to application. Application of materials shall be according to the manufacturer's instructions. The application of the corrosion inhibitors to the bridge deck, sidewalk, and parapet surfaces shall be completed in its entirety at all locations prior to any start of milling and resurfacing work within the project limits. This is to ensure that the surface application of the bridge deck is not affected in any way from interaction with milling debris or hot mix asphalt.



FHWA RULING ON PATENTED AND PROPRIETARY PRODUCTS

On September 27, 2019, FHWA issued a final rule in the Federal Register rescinding the long-standing regulatory provisions for patented or proprietary products in 23 CFR 635.411(a)-(e). This rule provides greater flexibility and encourages innovation in the selection of proprietary or patented materials. It eliminates the requirements limiting the use of Federal funds in paying for patented or proprietary materials, specifications, or processes.



U.S. Department of Transportation
Federal Highway Administration

This ruling will allow Surtreat's SurCoRepair Life Extender System to be used on Federally Funded Projects

SURTREAT® Life Extension Technology for your Concrete Assets